



Zen

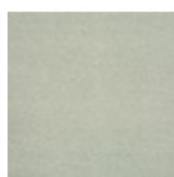
Les moquettes en polyamide, connues pour leur longévité, sont parfaites pour chaque pièce. Un des plus grands avantages est la résistance des fibres à l'usure extrême. Cela rend l'usage très pratique, spécialement dans les zones avec beaucoup de passage, parce que les fibres maintiennent leur forme bien plus longtemps comparé à d'autres matières. Même après de nombreuses d'années, la moquette gardera l'aspect du premier jour.

APPLICATIONS

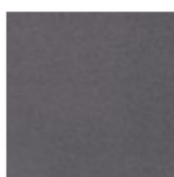


CARACTÉRISTIQUES TECHNIQUES

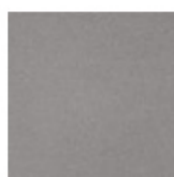
Envers:	SB
Code qualité:	ZEN
Technique de fabrication:	1/10" Saxony
Nature de velours:	PA
Comportement au feu:	Bfl-s1
EN 1307 Classification:	Cl. 33 Commercial Heavy



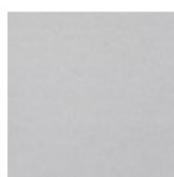
850
ETAIN



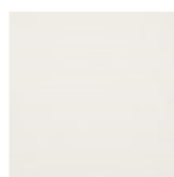
861
GRAVIER 1



871
ARGENT 1



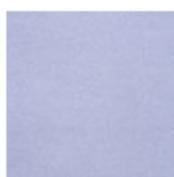
881
PERLE 1



891
BLANC 1



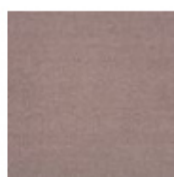
021
LAVENDE 1



034



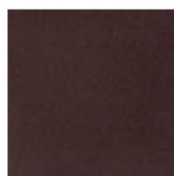
041
ANÉMONE 1



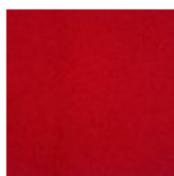
054



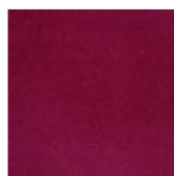
061
BRUYÈRE 1



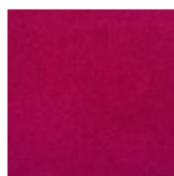
091
AUBERGINE 1



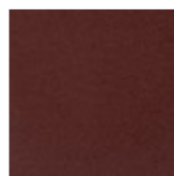
109
BORDEAUX 9



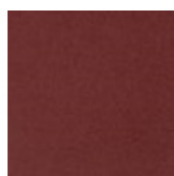
110
CARMIN



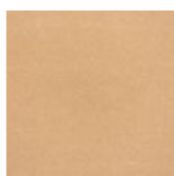
124
CORAIL 4



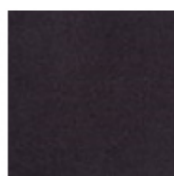
131
ROSE 1



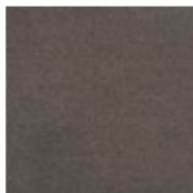
141
ROSE ANC. 1



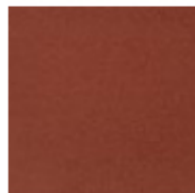
164
PÊCHE 4



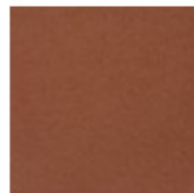
271
LIÈGE 1



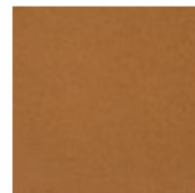
280
HAVANE



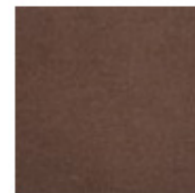
301
ACAJOU 1



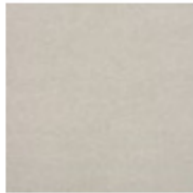
311
ROUILLE 1



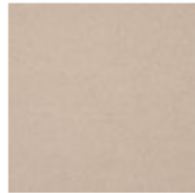
321
COGNAC 1



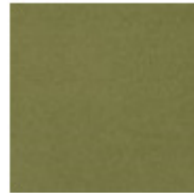
423
CASTOR 3



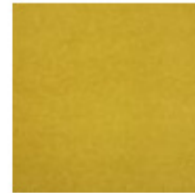
434
LIMON 4



451
SABLE 1



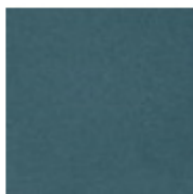
511
GAZON 1



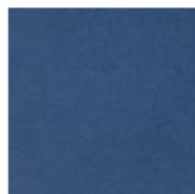
544
CURRY 4



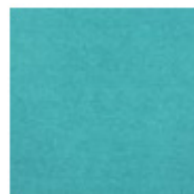
624
PEUPLIER 4



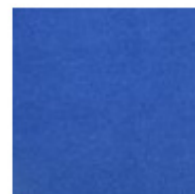
674
PÉTROLE 4



711
ATLANTIC 1



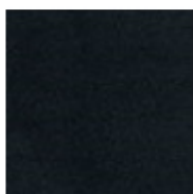
734
AZUR 4



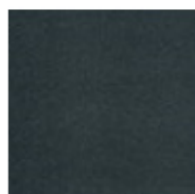
774
SAPHIRE 4



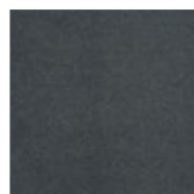
790
INDIGO



800
NOIR



810
ASTRAKAN



820
ARDOISE



830
CENDRE



840
SOURIS

